



***stoanz ltd* | StoArmat Plaster System
StoLastic Jointing System**

Solutions for Ventclad and
Monotek® construction

Sto the international brand

Selected with confidence worldwide.

Growth on a solid foundation

Since its establishment in 1835, Sto has undergone an astonishing course of development, from a simple German lime and cement works into one of the leading suppliers of facade insulation systems and manufacturer of high-quality exterior & interior plaster systems and coatings worldwide.

Sto AG has subsidiaries and distribution partners in over 50 countries around the globe. This presence provides Sto with a precise understanding of local climatic conditions, architectural styles, building practices, standards and tastes.

As the authorized partner of Sto for Australasia, **Stoanz Ltd** is committed to the Sto philosophy. Today having developed a full range of Sto plaster systems that have been tested and certified by BRANZ for the New Zealand market, Sto is recognized as a leader in the plaster facade and cladding market.



Head office Sto, Black Forrest, Germany.



People and architecture, Sto provides the link

Architecture plays an important role in our lives. It lends urban and rural landscapes character, and should ideally be embedded in an intact environment. For us, "Building with conscience" means enhancing functionality and aesthetics on a sustainable basis and creating an environment in which people feel at one with their surroundings.

Apart from researching, developing and marketing Sto products, systems and services, we also attach great importance to optimising the value added process for trades people, architects and building owners alike.

Sto facades

International benchmark in jointing, plaster and facade systems.



Sto on fibre cement sheet.

Traditional construction method combined with tested and certified cladding technology

New Zealand with a housing industry predominantly based on timber framing has favoured easy to maintain monolithic cladding. With James Hardie Monotek® systems, fibre cement sheet has a proven record of providing an economical cladding solution with design flexibility, that meets today's requirements for architects and home owners.

Researching the vigorous demands of sheet cladding construction Sto's technical staff with a complex range of modern analytical equipment, pursued innovative technology to meet ecologically acceptable standards. Using this approach Sto has developed a comprehensive range of facade plasters, finishing renders and solutions to enable the specifiers to select an individual style to meet the project requirements.

We respect the interests of people and nature at all times

In order to define and implement its ecological targets, Sto has developed a system of environmental management conforming to international standards. This relates to the entire process chain - from the procurement of the raw product, to production, packaging and logistics.

Sto products make a clear contribution towards improving the quality of the environment. External wall insulation cladding systems are extremely energy efficient, cutting heating requirements and preventing the release of CO₂ emissions. These systems contribute to the effort Sto is making towards active environmental protection through reducing air pollution, heating and energy to conserve the global climate.

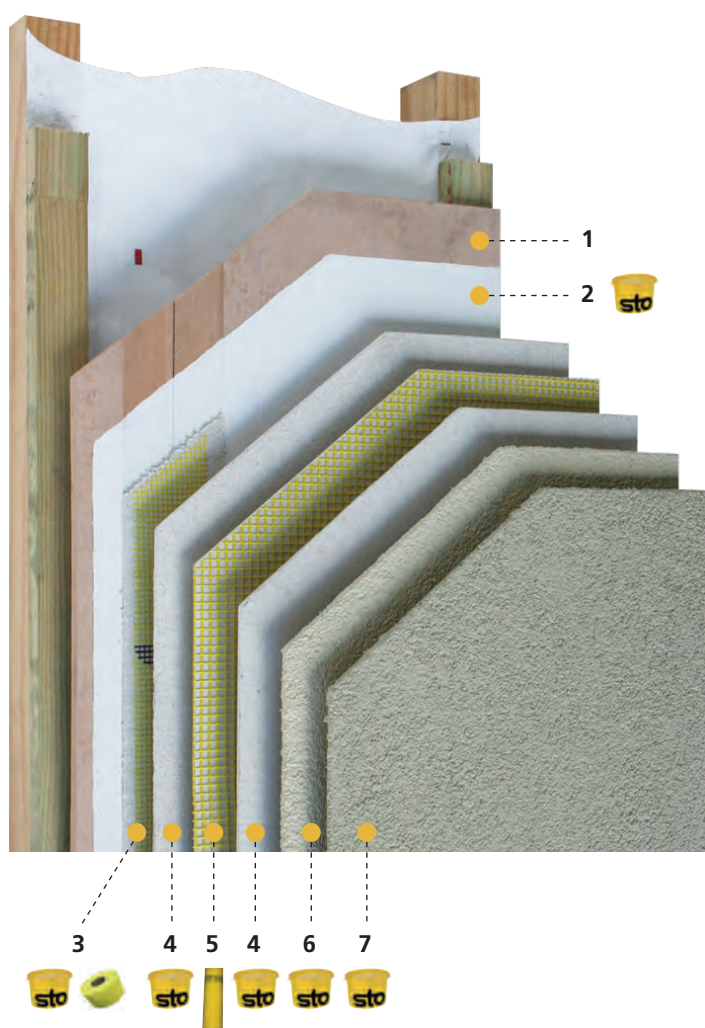


Sto with its environmental efforts is always a step ahead.

StoArmat Plaster System

A well engineered and aesthetical solution for added values.

StoArmat is a BRANZ appraised plaster system that provides the optimal protection and durability for tapered fibre cement sheet constructions. Before the system can be applied the surface is treated with Sto Putzgrund primer and all joints then are flushed using StoArmat embedded with Sto Jointing mesh to reinforce them. A full StoArmat RFP mesh reinforced plaster incorporating micro fibres provides strength and durability interlocking the complete fibre cement sheet componentry. Finished in Stolit finishing render and Sto facade paint. This European manufactured and certified plaster system is breathable, fracture and impact resistant, to provide a modern contemporary facade engineered to last the distance.



Perfect interaction

1 Substrate: Fibre Cement Sheet

New Zealand manufactured Eterpan Ventclad or James Hardie Monotek® system.

2 Primer: Sto Putzgrund

European manufactured and certified, water based primer in a pail, containing an organic binder and good adhesion properties.

3 Joint treatment:

StoArmat RFP/Sto Jointing mesh

Easy to install, meeting the highest requirements for crack, stress and alkalinity resistance.

4 Reinforcement: StoArmat RFP

European manufactured and certified, strong, malleable, impact resistant, white reinforcing plaster in a pail. Contains a calibration grain ensuring correct mesh coat thickness. (No cement)

5 Plus: Sto European mesh

Easy to install, meets the European requirements for crack, stress and alkalinity resistance.

6 Finishing render: Stolit range

European manufactured and certified, organically bound, strong, hard wearing, impact resistant, pre coloured finishing renders. (No cement)

7 Coating:

StoColor Maxicryl - matt facade paint

StoLastic Color - satin matt facade paint

European manufactured and certified durable facade paints available in a full range of colours.

StoSilco Color G - mineral silicone resin

European manufactured and certified self cleaning mineral paint with a breathable structure, in a full range of colours. Not recommended in dark or strong tints.



BRANZ appraisal 488



15 years system warranty

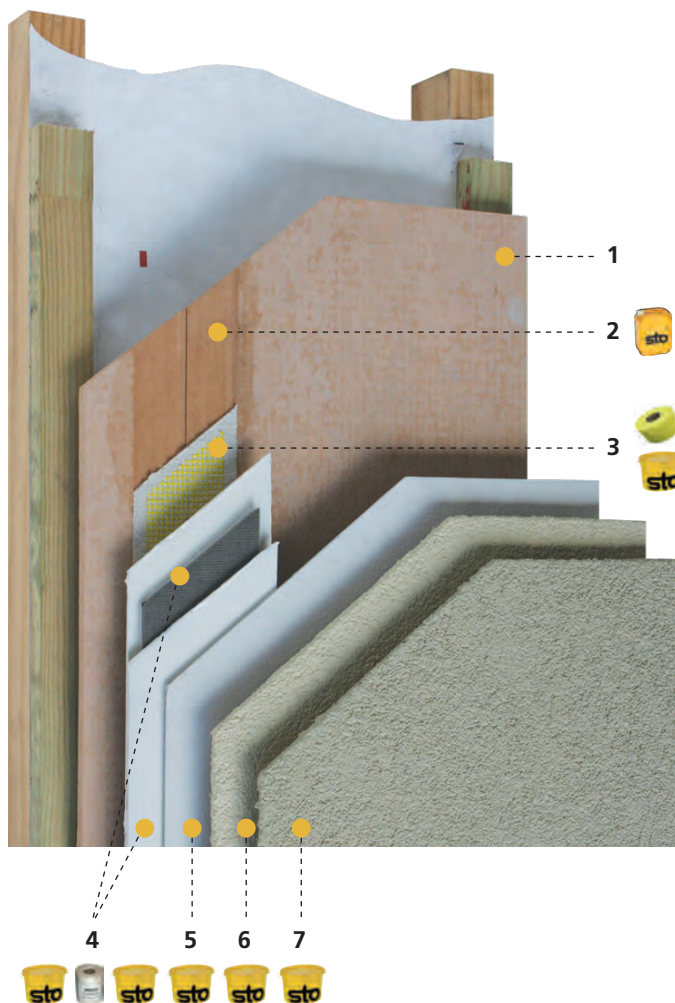
For more information and CAD details
please visit:
www.sto.co.nz
(for technical, click on: Building with Sto)

masterspec 4283 SF - Monotek

StoLastic Jointing System

An economical solution to protect your home.

StoLastic Jointing system is BRANZ appraised. It incorporates StoPlex W to seal the sheet joints. The Joints are then flushed using StoArmat RFP embedded with Sto Jointing mesh to provide reinforcement and stability. Once dry a second reinforcement coat is applied, incorporating StoLastic Fill an elastomeric jointing paste and StoLastic Mesh RF with high crack prevention properties to provide flexibility and durability. The jointed sheets are then sealed with Sto Putzgrund primer, finished with Stolit K coloured finishing render and Sto facade paint for ease of maintenance. This system is an economical and aesthetical solution for Monotek® system.



Perfect interaction

1 Substrate: Fibre Cement Sheet

New Zealand manufactured Eterpan Ventclad or James Hardie Monotek® system.

2 Sealer: StoPlex W

European manufactured aqueous, acrylate universal primer with siloxane additives. Good penetration capability, with adhesion improving, absorbency regulating and water repellent properties.

3 Joint treatment:

StoArmat RFP

European manufactured and certified, strong, malleable, impact resistant, white reinforcing plaster in a pail. Contains a calibration grain ensuring correct mesh coat thickness. (No cement)

Plus: Sto Jointing mesh

Easy to install, meets the highest requirements for crack, stress and alkalinity resistance.

4 Additional joint reinforcement:

StoLastic Fill

European manufactured and certified, filled, cold elastic dispersion paste to flush the filled joint.

Plus: StoLastic Mesh RF

Specially engineered reinforcement mesh to prevent crack formation, with high tear resistance.

5 Primer: Sto Putzgrund

European manufactured and certified, water based primer in a pail, containing an organic binder and good adhesion properties.

6 Finishing render: Stolit K range

European manufactured and certified, organically bound, strong, hard wearing, impact resistant, pre coloured finishing renders. (No cement)

7 Coating:

StoColor Maxicryl - matt facade paint

StoLastic Color - satin matt facade paint

European manufactured and certified durable facade paints available in a full range of colours.



BRANZ appraisal 499



15 years system warranty

Stolit: Coloured finishing renders

Provide your facade with optimum protection.

Stolit: Organic finishing render

Stolit organic finishing renders are manufactured in Europe and certified around the world.

They have been in successful use for over 50 years on a variety of different substrates. During this time they have undergone a continual process of optimisation.

The perfect combination of properties:

Durable, strong, hardwearing, impact resistant, malleable, weather resistant, colour stable and highly resistant to micro-organisms. They are designed with good vapour permeability to allow the building to breathe while still repelling liquid water. All renders are easy to apply and can be tinted from the StoColor System or matched to the colour of your choice, using the Sto spectrometer.



Stolit K 1.0 mm



Stolit K 1.5 mm

Coloured self gauging float finishing renders.



Stolit K 2.0 mm



Stolit K 3.0 mm

Coloured self gauging float finishing renders.

StoArmat System only



Stolit MP



Stolit MP Natural

Coloured fine float, sponge or light adobe finishing render.

Coloured fine finish float, sponge or light adobe sand speckled finishing render.

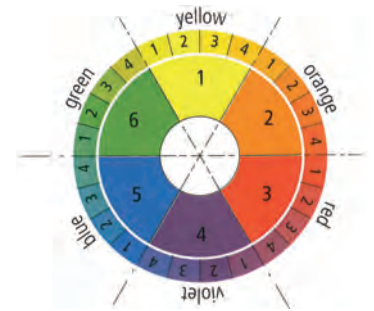


Whichever plaster you choose, it will be part of the tested and approved system and will provide optimum protection and durability.

The perfect finish: Competence in colour

Give your facade the look it deserves.

The well-aimed use of colour in a manner which complements the architecture is subject to specific laws. The StoColor System provides a clear framework and a systematic approach to colour design based on subtly nuanced colour concepts of high aesthetic appeal.



The StoColor System

Is a structured system offering great variety in a unique planning instrument for the use of colour. A total of 800 different colours establish a sound foundation for creative and pioneering colour concepts. The StoColor System eschews colorimetric logic in favour of human perception of colour. It is based primarily on the colours yellow, orange, red, violet, blue and green. These six sections

are then mixed to form the 24 basic tones which correspond to the 24-part colour wheel. Each basic tone is assigned five colour rows which embody the principle of the same-colour triangle. This guarantees the StoColor System's high degree of functionality – designed in line with the aesthetic colour requirements in construction.



StoColor Maxicryl

European manufactured and certified, hard, durable, matt, acrylic facade paint for a natural look. Available in a full range of colours.




StoLastic Color

European manufactured and certified, elastic, durable, dirt resistant and vapour permeable satin matt facade paint for added durability. Available in a full range of colours.



StoSilco Color G

European manufactured and certified, self cleaning mineral silicone resin paint with a breathable structure in a full range of colours.



Head Office Wellington
Stoanz Limited
72 Abel Smith Street
Te Aro
Wellington
Phone: 04 801 7794
Fax: 04 384 9828
Email: info@sto.co.nz
Internet: www.sto.co.nz

Auckland
Stoanz Limited
3 McColl Street
Newmarket
Auckland
Phone: 09 522 1058
Fax: 09 522 1054

Tauranga
Stoanz Limited
Phone: 027 299 9290
Fax: 07 543 4736

Christchurch
Stoanz Limited
Unit 1/15 Marylands Place
Addington
Christchurch
Phone: 03 338 3570
Fax: 03 338 3571

Available nationally through the Sto applicator network.